

Mart Saar

Kevadel

G. Suits

1921

Quasi allegretto

pp

leggiero

8

Suud --- le mind,

1 *pp*

Detailed description: This system contains the first two measures of the piece. The vocal line begins with a whole rest, followed by a half note 'Suud' and a quarter note 'le mind,'. The piano accompaniment starts with a half note chord in the right hand and a half note chord in the left hand. The key signature has three sharps (F#, C#, G#) and the time signature is 2/4.

suud --- le mind, ke --- va - de tuul, en --- ne kui

4

Detailed description: This system contains measures 3-6. The vocal line continues with 'suud --- le mind, ke --- va - de tuul, en --- ne kui'. The piano accompaniment features a steady eighth-note accompaniment in the left hand and chords in the right hand. Measure 5 includes a fermata over the vocal line.

su --- reb rind, tar --- re - tab huul.

8

Detailed description: This system contains measures 7-10. The vocal line continues with 'su --- reb rind, tar --- re - tab huul.'. The piano accompaniment continues with the eighth-note accompaniment in the left hand and chords in the right hand.

p

Suud --- le mind, suud --- le mind ke --- va - de tuul,

12 *p*

Detailed description: This system contains measures 11-14. The vocal line begins with a half note 'Suud' and a quarter note 'le mind, suud --- le mind ke --- va - de tuul,'. The piano accompaniment continues with the eighth-note accompaniment in the left hand and chords in the right hand. The system ends with a fermata over the vocal line.

en---ne kui su---reb rind, tar---re-tab huul!

16

Eks o---le mi---nul-gi

20

tuk---su-vat verd, pil---gu vast

23

sil---mist-ki i---gat-sus-merd.

26

p

Eks o--le mi-----nul-gi tuk-----su-vat

29 *p*

pp

verd, pil-----gu vast sil-----mist--ki

32 *pp*

p

i-----gat-sus-merd. Vaa-----ta, ju

35 *p*

leh-----ti-nud ak-----na all puu,

38

41

ōi — — — — te — ga eh — — — — ti — nud ke — — — — vad ta

The first system consists of a vocal line and piano accompaniment. The vocal line is written in a treble clef with a key signature of three sharps (F#, C#, G#) and a common time signature. The lyrics are "ōi — — — — te — ga eh — — — — ti — nud ke — — — — vad ta". The piano accompaniment is written in a grand staff (treble and bass clefs) and begins at measure 41. It features a steady accompaniment with chords and moving lines in both hands.

44

ju,

The second system continues the vocal line and piano accompaniment. The vocal line has a long note for "ju,". The piano accompaniment continues with similar textures, starting at measure 44. The piano part includes some chords marked with an 'x'.

più lento

ke — — — — vad ta ju!

The third system is marked "più lento". The vocal line has a long note for "ke — — — — vad ta ju!". The piano accompaniment continues, starting at measure 47. The piano part includes some chords marked with an 'x'.

52

rit.

pp

The fourth system continues the piano accompaniment, starting at measure 52. It is marked "rit." (ritardando) and "pp" (pianissimo). The piano part includes some chords marked with an 'x' and ends with a double bar line.



Kevadel

G. Suits

Весной

J. Cyüre

Русский перевод Ю. Шумакова

Im Frühling

G. Suits

Aus dem Estnischen: O. Luik

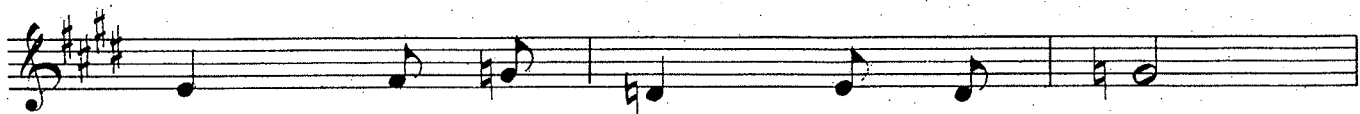
Quasi allegretto



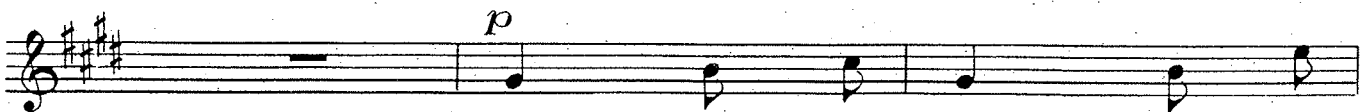
Suud--le mind, suud--le mind,
Неж--но вес--на, ты мен--
Küs--se mich, küs--se mich



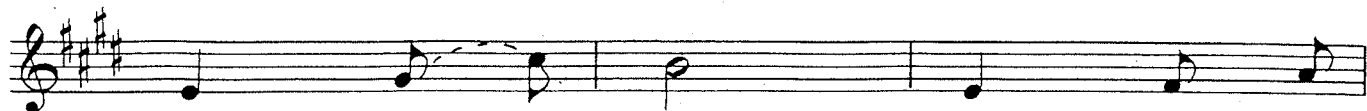
ke---va--de tuul, en---ne kui
я no--це---луй, го---лое ручь--
Früh---lings---wind! E---he das



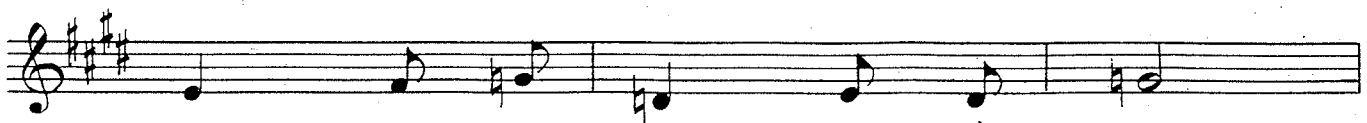
su---reb rind, tar---re---tab huul.
ёв пусть зву---чит лас---кой струй!
Herz mir und Lip---pe er---stirbt!



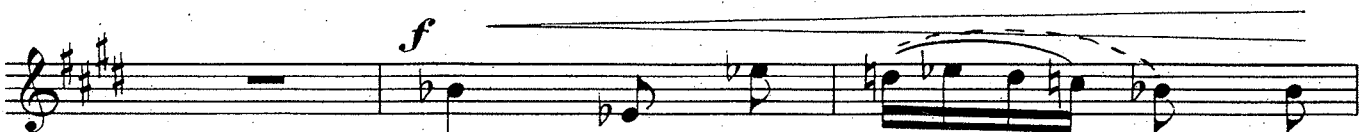
Suud---le mind, suud---le mind,
Неж---но, вес--на ты мен--
Küs---se mich, küs---se mich



ke — — — va — — de tuul, en — — — ne kui
 я но — — це — — луй го — — — мое ручь
 Früh — — — lings — — — — wind! E — — — — he das



su — — — — reb rind, tar — — — — re — — tab huul.
 чѣв нуць жур — чит лас — кой струй.
 Herz mir und Lip — — — — pe er — — — — stirbt!



Eks o — — le mi — — — — nul — — gi
 Be — — — — тер ве — — сен — — ний мен —
 Horch in den A — — — — — — — — dern



tuk — — — su — vat verd, pil — — — — gi vast
 я при — лас — — кай, тре — — — — ли лей
 poch — — — en — — de Lust, schwel — — — — len — — de



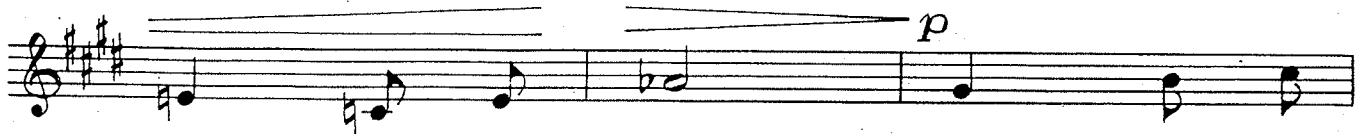
sil — — — — — mist — — ki i — — — — gat — sus — — merd.
 па — — — — — доет — но тре — — — — нет — ный май!
 Sehn — — — — sucht in wo — — — — gen — der Brust!



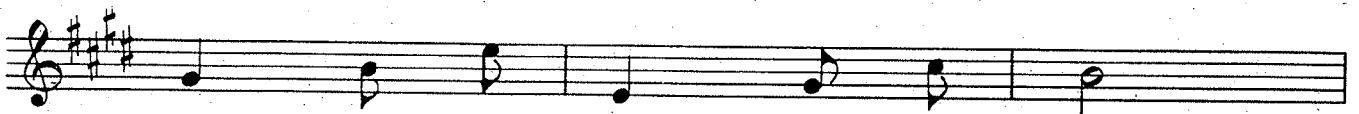
Eks o — — le mi — — — — nul — — gi tuk — — su — vat
 Be — — — — тер ве — — сен — — ний мен — я при — лас —
 Horch in den A — — — — — — — — dern poch — — — — en — de



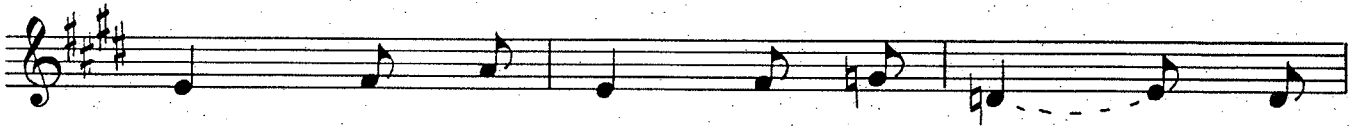
verd, pil- - - - gu vast sil- - - - - mist- - ki
 кай, тре- - - - ли лей па- - - - - дост- но
 Lust, schwel- - - - len- de Sehn- - - - sucht in



i- - - - gat- - sus - - merd. Ваа- - - та, жу
 тре- - - пет- - ный май. Клён под ок-
 wo- - - gen- der Brust! Bäü- - - me er- -



leh- - - ti- - nud ak- - - na all рии,
 ном за- - шен- - тал на вет- - ру,
 grün- - ten uns nun ü- - ber Nacht,



õi- - - te- - ga eh- - - ti- - nud ke- - vad ta
 вещь он лу- - чит- - ся, си- - я- - - ет в цве-
 schmückt sie der Früh- - ling mit Blü- - - - ten-



жу,
 ту,
 pracht,

ke- - - -
 вещь
 mit



- - - - - vad ta жу!
 он в цве- ту!
 Blü- ten- pracht!